



**PERPUSTAKAAN
TUNKU TUN AMINAH**
UNIVERSITI TUN HUSSEIN ONN MALAYSIA

TUNKU TUN AMINAH

Library Where Wisdom Begins

Guide Book



@PTTAUTHM

Perpustakaan
TUNKU TUN AMINAH
<https://ptta.uthm.edu.my>





ADVISOR

Zaharah Abd Samad

CHIEF EDITOR:

Siti Afifah Che Ismail
Suhaimi Mohd Sukor

EDITORS

Norhaslini Abd Alim
Norfauzan Md. Sarwin

COMMITTEES:

Normajihan Abd Rahman
Norizan Noorman
Mohd Khairul Azhar M. Yunos
Raja Nor Azlan Sulaiman
Mohamad Raihan Jaafar

**Hi
There!**



Zaharah Abd Samad
Chief Librarian
Tunku Tun Aminah Library

Assalamualaikum WBT and Good Day,

In the name of Allah, the Most Gracious and the Most Merciful. Praise be to Him, Lord of the Universe, and Prayers and Peace be upon His Final Prophet and Messenger, Muhammad SAW.

Tunku Tun Aminah library is a landmark of the Information Gateway Universiti Tun Hussein Onn Malaysia (UTHM). Its functions as an aesthetic location for the learning, research and exploration of knowledge activities, in line with its motto "Where Wisdom Begins".

Aligned with PTTA's vision "Aspires to be a dynamic knowledge gateway", the library will always strengthen its role and ensure it remains relevant by offering services and facilities that meet the current needs of users.

In addition, a comfortable space with learning facilities is also provided to ensure that the learning ecosystem is the best for carried out educational and research activities. Relaxing spaces, mind refreshers for innovation and creativity are also provided specifically for PTTA users. Most recently, PTTA has strengthened its role as guardian of knowledge by leading the Research and Innovation for Culture and Heritage Johor Project (RICHER).

PTTA users are our priority. Therefore, PTTA is always committed in providing quality reference resources either in printed or electronic format. PTTA also provides efficient and excellent services and facilities to meet the needs of customers in line with UTHM's vision, mission and objectives.

Finally, I am taking this opportunity to give a special acknowledgement to the Library Publication Committee, for their endless effort and commitment in making this library guides a reality. May Allah bless them.

Thank you.

Our Journey

Pusat Latihan Staf Politeknik (PLSP) Library
5,000 books
120 seats

Library automation system using VTLS (Virginia Technology Library System)

VTLS was replaced with ILMU (Integrated Library Management Utilities)

Universiti Tun Hussein Onn Malaysia (UTHM) Library Extension of the library at B5 Building (above the Bursary Office)
500 seats

1993

1996

1997

2000

2002

2004

2006

Institut Teknologi Tun Hussein Onn (ITTHO) Library

Kolej Universiti Teknologi Tun Hussein Onn (KUiTTHO) Library
Extension space of user reading area
40,000 books
200 seats

New branch: Town Campus Library, Parit Raja
80,000 books
300 seats

Town Campus Library moved to a new building

New building of UTHM Library
16,000 square meters of floor area
160,000 books
3,000 seats

New Branch:
UTHM Pagoh Resource Centre at Pagoh Higher Education Hub

2007

2008

2010

2010

2013

2017

2021

Groundbreaking ceremony

for a new building by Datuk Dr. Zulkefli A. Hassan, Secretary-General, Ministry of Higher Education Malaysia

ILMU was replaced with **SirsiDynix Symphony library system**

Proclamation of **Tunku Tun Aminah Library by Tunku Tun Aminah binti Sultan Ibrahim**, the princess of the Sultan Johor on **11th June. 200,000 books**

- New system (KOHA - open source integrated library system)
- UTHM Pagoh Resource Centre was moved and centralized at Shared Facilities Library
- Branding of OPAC (Online Public Access Catalogue) known as OSCAR (Online Smart Catalogue and Academic Resources) 255,000 books

VISION



Aspires to be a dynamic knowledge gateway.



MISSION



To provide and disseminate quality information resources to fulfil the academic needs and intellectual development through effective management based on Tawheed.



Objectives Quality

Ensure that 85% of the titles required in teaching and learning in the current year are in the library collection.

Aiming for 90% of reference materials to be catalogued within 2 weeks from the date of the library's copyright stamp.

Aiming for 2,000,000 accesses to the digital collection within a year.

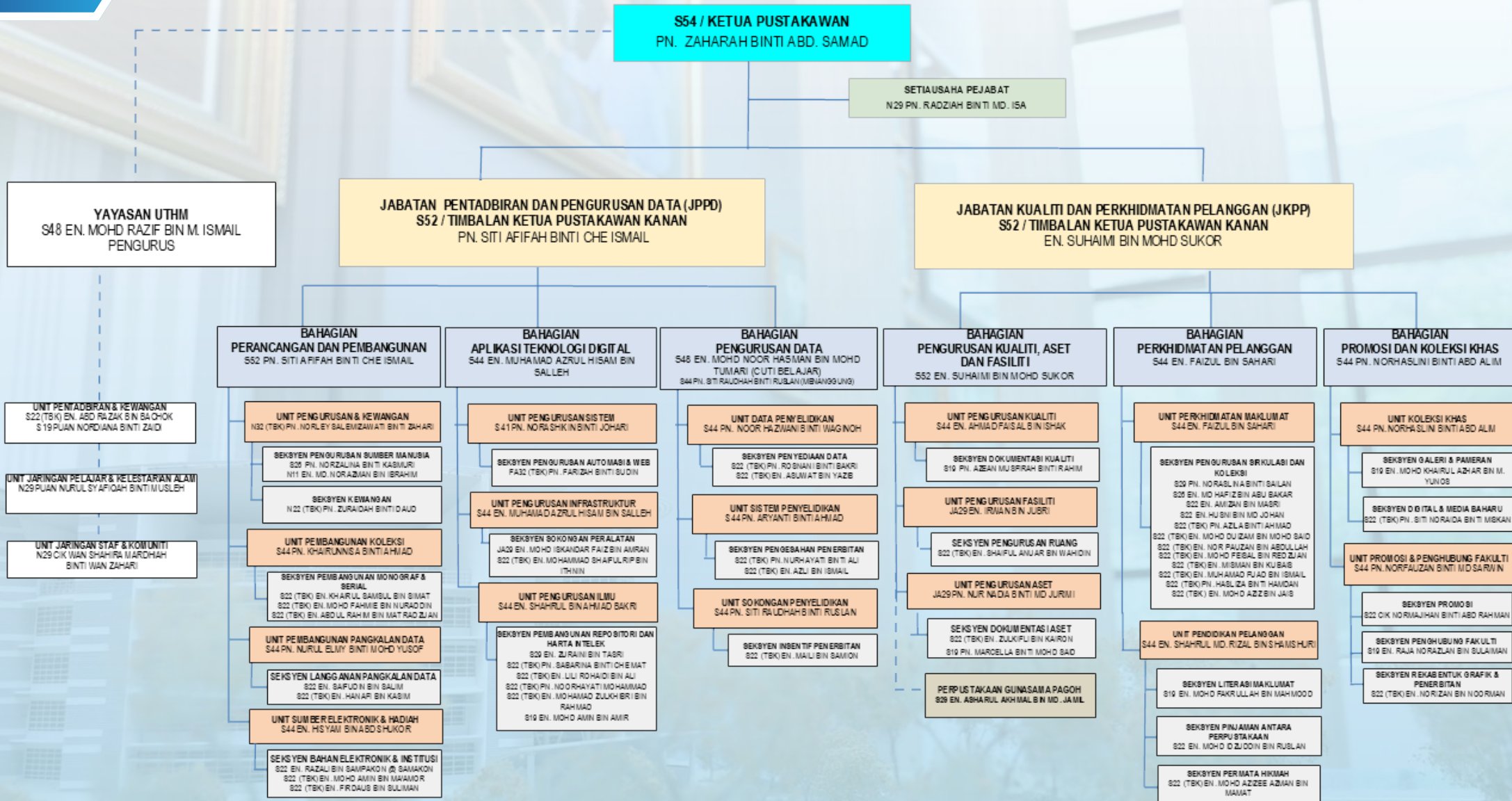
To Ensure that 100% of requests for the supply of Inter-Library Loan materials are completed within 5 working days.

Aiming for 80% attendance of new diploma and undergraduate students to the Information Literacy Skills Class within a year.

Ensure 100% deposit of materials received into the Institutional Repository (e-print) in the current year.

Aiming for 85% user satisfaction level towards library services in the current year.

Our Organizational



KEEP
IN TOUCH WITH OUR
F.L.O.
(FACULTY LIAISON OFFICER)

Enquiries on
library services

Consultation for your
research

Book
recommendation



Siti Raudhah
binti Ruslan
raudhah@uthm.edu.my

Siti Afifah
binti Che Ismail
afifah@uthm.edu.my

Fakulti Kejuruteraan Mekanikal dan Pembuatan



Norashikin
binti Johari
ashikin@uthm.edu.my

Suhaimi
bin Mohd Sukor
suhaimi@uthm.edu.my

Fakulti Sains Komputer dan Teknologi Maklumat



Norhaslini
binti Abd Alim
haslini@uthm.edu.my

Shahrul Md Rizal
bin Shamshuri
shahrulr@uthm.edu.my

Fakulti Pendidikan Teknikal dan Vokasional



Nurul Elmy
binti Mohamed Yusof
nuruly@uthm.edu.my

Khairunnisa
binti Ahmad
nnisa@uthm.edu.my

Fakulti Pengurusan Teknologi dan Perniagaan



Norfauzan
binti Md. Sarwin
norfauzan@uthm.edu.my

Muhamad Azrul Hisam
bin Salleh
azruhi@uthm.edu.my

Fakulti Kejuruteraan Elektrik dan Elektronik



Noor Hazwani
binti Waginoh
nhazwani@uthm.edu.my

Aryanti
binti Ahmad
aryanti@uthm.edu.my

Fakulti Kejuruteraan Awam dan Alam Bina



Asharul Akhmal
bin Md Jamil
asharul@uthm.edu.my

Shahrul
bin Ahmad Bakri
shahrulb@uthm.edu.my

Fakulti Sains Gunaan dan Teknologi



Nurhidayati Adila
binti Muhamat
nhidayati@uthm.edu.my

Faizul
bin Sahari
faizul@uthm.edu.my

Fakulti Teknologi Kejuruteraan



Zuraini
bin Tasri
zuraini@uthm.edu.my

Hisyam
bin Abd Shukor
hisyam@uthm.edu.my

Pusat Pengajian Diploma
Pusat Pengajian Umum dan Kokurikulum
Pusat Pengajian Bahasa



Noraslina
binti Sallan
naslina@uthm.edu.my

Saifudin
bin Salim
saifudins@uthm.edu.my

Johor Business School

»» Service Hours



Opening Hours

Day	Semester		
	Lecture Week	Study & Exam Week	Semester Break
Sunday - Thursday	8.00 am - 10.00 pm	8.00 am - 10.00 pm	9.00 am - 6.00 pm
Friday	Closed	8.00 am - 12.15 pm 2.45 pm - 5.00 pm	Closed
Saturday	Closed	8.00 am - 5.00 pm	Closed

Circulation Counter Service Hours

Day	Semester		
	Lecture Week	Study & Exam Week	Semester Break
Sunday - Thursday	8.00 am - 9.30 pm	8.00 am - 9.30 pm	9.00 am - 5.30 pm
Friday	Closed	8.00 am - 12.15 pm 2.45 pm - 5.00 pm	Closed
Saturday	Closed	8.00 am - 5.00 pm	Closed

Reference Desk Service Hours

Day	Semester		
	Lecture Week	Study & Exam Week	Semester Break
Sunday - Thursday	8.00 am - 9.30 pm	8.00 am - 9.30 pm	8.00 am - 3.30 pm
Friday - Saturday	Closed	Closed	Closed

Library's DO's & DON'Ts



Display student/staff card when entering the library



Be properly attired as specified by the university



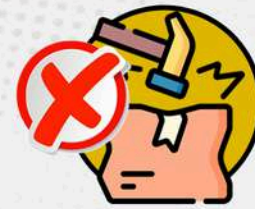
Keep your mobile phones silent



Bringing food and drinks



Moving library furniture and equipment



Defacing, tearing or damaging library materials



Bring out library materials without borrowing

- Users who make photocopies of library materials are fully responsible for any actions that violate the Copyright Act 1987 (Act 332).
- The library reserves the right to instruct users whose behavior or actions may disrupt the peace within the library premises to leave.
- Users who fail to comply with the regulations will face the following actions:
 - Instructed to leave the library building.
 - Denied entry and use of library services/facilities.
 - Suspended borrowing privileges.
- The library reserves the right to amend the library regulations occasionally.



Smoking or vaping



Extended plugs



Pets

Find Resources



This library collection is classified according to the **Library of Congress Classification (LCC)** and **Library of Congress Subject Headings (LCSH)**.



There are more than **2.7 millions digital collection** that includes **8 packages of online database**, **5 packages of e-books**, and **4 reference tools**.

With almost 296,216 of total collection



256,398

collections of printed materials.
(books, journals, magazines, theses, maps, photos)



39,818

of non printed materials.
(CD, DVD, diskettes, cassettes, microfilms, kits).

CATEGORY	DESCRIPTION	MATERIALS	SYMBOLS	LOCATION
Open Access	Covers reference books in various study fields. Shelved according to call number at the open rack.	Book	-	Level 2, 3 & 4
Reference	Covers reference materials which contain manual, fact, schedule, description, diagram, terminology, etc.. Known by symbols appeared in call number. This collection is for internal reference only.	Book	r	Level 2
		Dictionary/ Terminology/ Glossary	rd	Level 1
		Encyclopedia	re	Level 2
		Atlas	rm	
		Government Publication	rw	
		Index	rx	

CATEGORY	DESCRIPTION	MATERIALS	SYMBOLS	LOCATION
Closed Access	Covers most of the reference materials that are heavily used by users and available in limited copies. This collection is for internal reference only.	Standard & Patent	-	Level 2
Audio Visual	Covers audiovisual materials in several formats.	CD, VCD & DVD	-	Level 1
Control Item	Materials lending is restricted to academic staff only.	Laboratory Manual, Solution Manual & Study Guide	ci	Level 2 (Closed Access Collection)
Journal	Periodicals that have been published for academic purpose in certain matter, profession or field. This collection is for internal reference only.	Bound Journal & Current Journal	-	Level 3 (Journal Room)
Magazine	Light reading periodicals which contain story, articles, etc. This collection is for internal reference only.	Bound Magazine Current Magazine	-	Level 3 (Journal Room)

CATEGORY	DESCRIPTION	MATERIALS	SYMBOLS	LOCATION
<p align="center">UTHM Special Collection</p>	<p>Covers materials about UTHM, materials written by UTHM staff or students and UTHM publications either in printed or digital format. This collection is for internal reference only.</p>	General	a	<p align="center">Level 2 (Closed Access Collection)</p>
		Conference Paper	ra	
		Thesis	ra	
		Case Study	ra	
		Technical drawing	rab	
		Prospectus	raj	
		Magazine/ Journal	raj	

CATEGORY	DESCRIPTION	MATERIALS	SYMBOLS	LOCATION
Digital Document	Covers all documents that are accessible through search engines at library website	Exam Paper, Thesis Abstract, Conference Paper, Journal Article, UTHM publication, Newspaper, Corporate Video, Audio, Photo, Bulletin & other documents.	-	Online
Online Resources	Covers subscribed databases, e-books & e-journals.	Online Database, e-Books & e-Journals.	-	Online
Creative	Covers novel genre, especially in Malay and English language. Some of them are in Japanese.	Novel	cn	Level 4

CATEGORY	DESCRIPTION	MATERIALS	SYMBOLS	LOCATION
Map	Includes Malaysia and states of Malaysia maps. This collection is for internal reference only.	Map	-	Level 1 (Closed Access Collection)
Small Item	Books less than 10 x 15 cm in size.	Book	k	Level 1 (Closed Access Collection)

Circulation Services



Membership Registration

The library will register all UTHM students and staff as library members. New students and staff are advised to check their account through the library website. If the record is still unavailable in the Library System, users have to fill up the Membership Registration Form at the Circulation Counter. Borrowing eligibility for each member will be determined according to the patron category.



Reminder/Overdue Notice

Reminder Notice will be sent to users through email 3 days before the due date to inform users of the due date and to remind them for loan renewal. Whereas the Overdue Notice will be sent automatically 1 day after the due date. The user account will be barred if the total amount of the fine has exceeded the maximum limit allowed.



Borrowing and Returning

Borrowing and returning of library materials can be done at the Circulation Counter. Users are strongly advised to check the due date on the slip or check through the borrowing record in their library account in order to avoid fines for late returns of library materials.

Collection Types

Fines (Day)

Open Access

RM0.20

Audio Visual



RM0.50

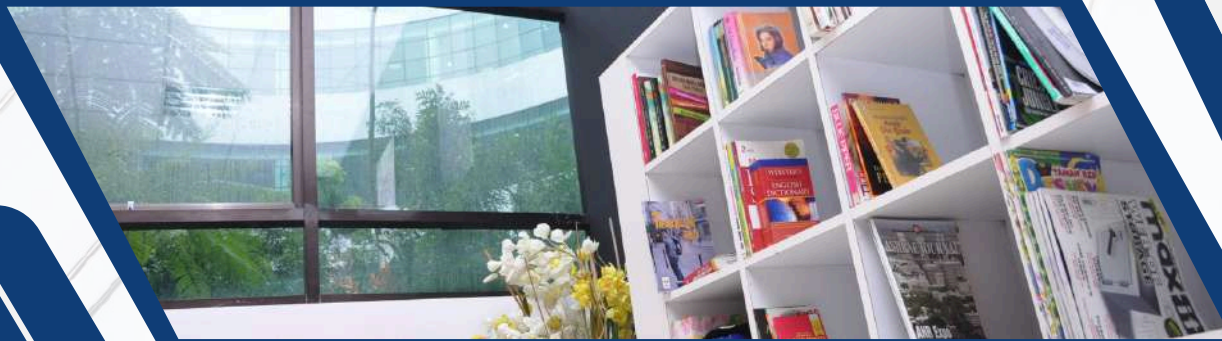
Creative

RM0.20

»»» Fine Payment



1	E-debit	Credit/debit card at the Treasurer's Office counter
2	FPX	Payment through internet banking BMMB account: 01070000001716
3	QR-Pay	Payment via QR code (i-muamalat & maybank2U)
4	JomPay	<p>Payment through internet banking</p> <div style="border: 1px solid black; padding: 5px; margin-bottom: 10px;">  <p>Biller Code: 39057 Ref-1: Matric number Ref-2: Identity card number</p> </div> <p>JomPAY online at Internet and Mobile Banking with your Current, Savings or Credit Card account</p> <div style="border: 1px solid black; padding: 5px;">  <p>Biller Code: 64360 Ref-1: Staff number Ref-2: Identity card number</p> </div> <p>JomPAY online at Internet and Mobile Banking with your Current, Savings or Credit Card account</p>



Replacement of Lost Materials



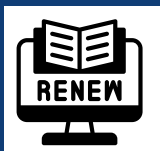
Users are required to report at circulation counter if the library materials that they had borrowed were lost. Users will be given 1 month to search for the lost materials. If they still could not find it, they are required to replace the lost materials with the same materials or pay the price of the materials.

Delivery Service



Delivery Services is provided for academic staff within the campus area. This service covers reserved material that consists of open access books, audiovisual and interlibrary loan materials. Besides, user also can request for returning the materials borrowed through this service.

Renewal



Renewal can be done online through the library's user account. Users can only renew twice. Online renewal can be done before the due date.

Reservation of Library Material



All items which are currently on loan to other users may be reserved through on-line catalogue or at the Circulation Counter. Reserved items are held for user for 7 days after the materials returned. Users are advised to check on the status through their library account.

Reservation Rooms



The library offers different types of room that can be reserved by users. These rooms consist of Iqra Rooms, Hikmah Rooms, Eksplorasi Rooms, Lestari Rooms and Al-Jazari Auditorium. Reservations can be done at the circulation counter, Level 1.

Inter-Campus Delivery Service (ICDS)



ICDS provides delivery library material from Tunku Tun Aminah Library to academic staff and student in Pagoh UTHM Campus.

REFERENCE AND INFORMATION SERVICES



References Services

Users can discuss with the librarian to get some guidance on the information searching techniques based on the users' needs.



Information Literacy Skill Class

This class topics include materials searching techniques through OSCAR and information searching through the online databases.



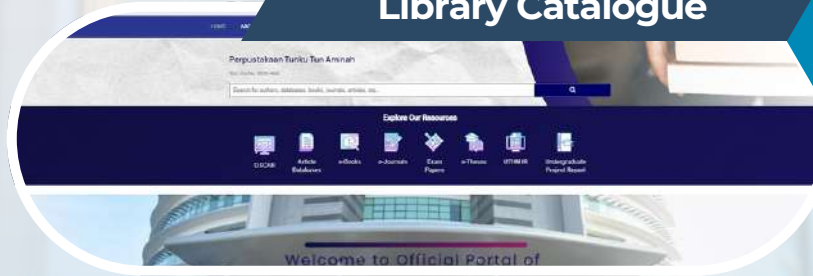
Interlibrary Loan (ILL)

Interlibrary Loan (ILL) is a service which helps users to borrow library materials that are unavailable in the Tunku Tun Aminah Library but can be obtained from other local academic libraries. Reference materials that can be borrowed through this service are books, journal articles, and conference proceedings and standards.



Facilities

Library Catalogue



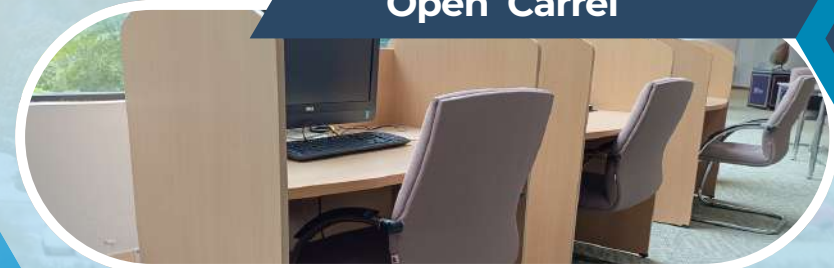
Free WiFi



Computers



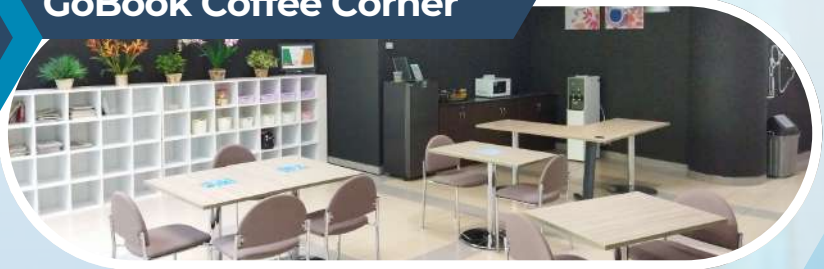
Open Carrel



✓ Open Reading Room



✓ GoBook Coffee Corner



✓ 24 Hours Reading Room



✓ Turnstile Gate



SPECIAL USER Area

Tunku Tun Aminah Library greatly appreciates users with disabilities. We support them in teaching and learning process here such as:

1. User-friendly counter service for disabled users
2. Reading room for disabled users
3. Friendly toilet for disabled users
4. Volunteer services for disabled users
5. User-friendly elevator for disabled user



A modern office interior with a curved staircase and a lounge area. The scene is overlaid with a large blue circular graphic and a grid of blue lines. The text is centered in the lower half of the image.

In order to write about life,
first you must live it.



UTHM Chancellor Exhibition

A photograph showing an exhibition space with several large vertical display panels. The panels feature portraits and text, likely related to the UTHM Chancellor. The exhibition is set on a green carpeted floor against a dark backdrop.



Recreation Space

A photograph of a recreation area containing two stationary exercise bikes. The room has a light-colored floor and a simple, functional design.



Circulation Counter

A photograph of a circulation counter area. Two staff members are seated at a desk with a computer monitor. The background wall features the text "KAUNTER SIRKULAS" and "PERPUSTAKAAN TUNKU TUN AMINAH".



Johor Heritage Gallery

A photograph of a heritage gallery. It features several large display panels with text and images, along with a glass display case in the foreground containing small artifacts. The gallery is well-lit and organized.



Closed Access Room

A photograph of a closed access room, which is a library section with high shelves filled with books. A sign in the foreground reads "PENCARIAN TESIS" and provides instructions for thesis search.



Audio Visual Room

A photograph of an audio-visual room, showing rows of bookshelves filled with books. The room is designed for audio-visual materials, with a focus on organized shelving.

Level 1



Big Stage



SDGs Corner



UTHM A.I. Lab



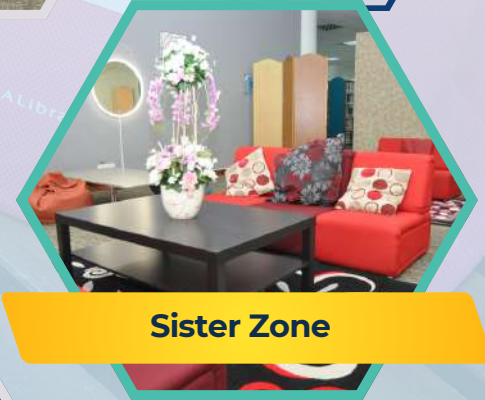
S.I.R. Corner



Iqra Room



Hikmah Room



Sister Zone



Remote Pilot Smart Classroom

Level 2



Lestari Lounge



Lestari Room 1 & 2



Journal Room



Eksplorasi Room



Al-Jazari Auditorium



Student's Workspace

Level 3



Bibliotherapy Corner



Serambi al-Quran



PTTA Mini Museum



Iqra Room

Level 4

RICHER

— Research and Innovation in Culture and Heritage of Johor —

RICHER Project is a rebranding of research and innovation activities on Johor's culture and heritage to develop centralized database and information dissemination platform for artifacts in the form of photographs, newspaper clippings, videos, digital media and so on.



Among the projects:

- a. The Battle of Parit Sulong
- b. History of Iron Mining in Sri Medan
- c. Gampus: History, Instrumentation and Game Style in Johor



Showcase @UTHM

The Drone Technology @UTHM Showcase is located at level 3. This showcase serves to introduce the drone technology and research about the drone development and innovations done by UTHM researchers including the C-Drone, Malaysian biggest drone and heaviest payload capability, certified by The Malaysian Books of Record.



Located at level 2, this showcase offers the information regarding to products and innovations that have been produced by UTHM.



Living Lab Muar initiative tries to translate various problems in the Sungai Balang rice fields into new opportunities.



The Makerspace exhibition is located on level 3 to promote UTHM's Makerspace products and support STEM learning in Johor State schools.



User's Eligibility



Diploma/Bachelor Student

Open Access

15 materials/30 days

Audio Visual

1 materials/1 days

Creative

3 materials/30 days

Master Student

Open Access

20 materials/30 days

Audio Visual

1 materials/1 days

Creative

3 materials/30 days



PhD Student

Open Access

20 materials/30 days

Audio Visual

3 materials/3 days

Creative

3 materials/30 days

Tutor

Open Access

20 materials/60 days

Audio Visual

3 materials/3 days

Creative

3 materials/30 days



Lecturer

Open Access

30 materials/90 days

Audio Visual

3 materials/5 days

Creative

3 materials/30 days

Admin Staff

Open Access

10 materials/30 days

Audio Visual

1 materials/3 days

Creative

3 materials/30 days



External Membership



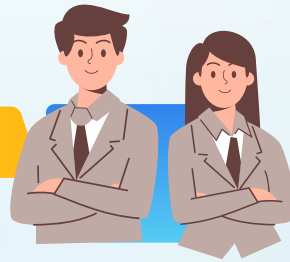
Individual (Community)

Registration Fee
RM 10

Borrowing Fee
RM 300/1 book/30 days

Student (Primary/Secondary School)

Registration Fee
RM 5



Public Institution (Non-profit/GLC's)

Registration Fee
RM 20

Borrowing Fee
RM 300/1 book/30 days

Course Participant (by UTHM less than 6 months)

Registration Fee
RM 20

Borrowing Fee
RM 300/1 book/30 days



Corporate (Profit based private sector)

Registration Fee
RM 20

Borrowing Fee
RM 500/1 book/30 days

Permata Hikmah (Kids 6-12 years old)

Registration Fee
RM 20



Classification of Library Materials

Materials on the shelves are arranged according to the Library of Congress Classification Scheme. This is to facilitate users in their search. A simplified classification schedule is provided as below:



● A) Library of Congress Classification

A	General Works
B	Philosophy. Psychology. Religion
C	Auxiliary Sciences of History
D	World History and History of Europe, Asia, Africa, Australia, New Zealand, Etc.
E-F	History of the Americas
G	Geography. Maps. Anthropology. Recreation
H	Social Sciences (General)
HA	Statistics
HB	Economic theory. Demography
HC	Economic history and conditions
HD	Industries. Land use. Labor
HE	Transportations and communications
HF	Commerce
HG	Finance
HJ	Public Finance
HM	Sociology (General)
HN	Social history and conditions. Social problems. Social reform
HQ	The family. Marriage. Women
HS	Societies: secret, benevolent, etc.
HT	Communities. Classes. Races
HV	Social pathology. Social and public welfare. Criminology
HX	Socialism. Communism. Anarchism
J	Political Science
K	Law
L	Education
M	Music and Books on Music
N	Fine Arts
P	Language and Literature

Classification of Library Materials

Materials on the shelves are arranged according to the Library of Congress Classification Scheme. This is to facilitate users in their search. A simplified classification schedule is provided as below:

● A) Library of Congress Classification

Q	Science (General)
QA	Mathematics. Computer science. Electronic data processing
QB	Astronomy
QC	Physics
QD	Chemistry
QE	Geology
QH	Natural history. Biology
QK	Botany
QL	Zoology
QM	Human anatomy
QP	Physiology
QR	Microbiology
R	Medicine
S	Agriculture
T	Technology (General)
TA	Engineering (General). Civil engineering (General)
TC	Hydraulic engineering. Ocean engineering
TD	Environmental technology. Sanitary engineering
TE	Highway engineering. Roads and pavements
TF	Railroad engineering and operation
TG	Bridge engineering
TH	Building construction
TJ	Mechanical engineering and machinery
TK	Electrical engineering. Electronics. Nuclear engineering
TL	Motor vehicles. Aeronautics. Astronautics
TN	Mining engineering. Metallurgy
TP	Chemical technology
TR	Photography
TS	Manufactures
TT	Handicrafts. Arts and crafts
TX	Home economics
U	Military Science
V	Naval Science
Z	Bibliography. Library Science. Information Resources



Classification of Library Materials

B) Call Number

Each book in the library has a unique call number. A call number is an address that informs where a book is placed in the library.

It consists of the following information:

- Class
- Subclasses
- Classification by area, format and etc. if any subclasses, geography, format
- Cutter Number based on the main entry e.g. the author's, corporate body, institution or title's first letter
- Year of publication
- Symbol

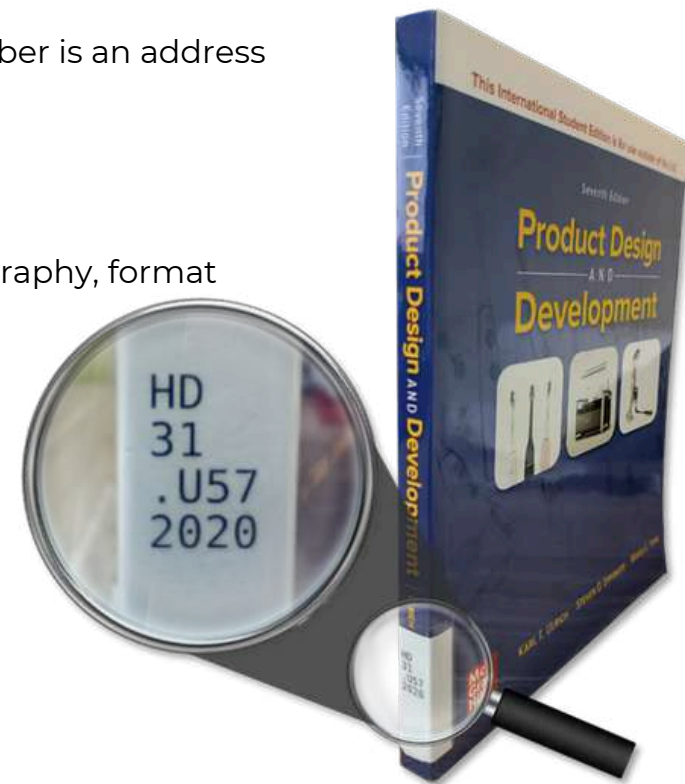
Example: **HD31 .U57 2020**

HD31 ----- Subject (Industrial Design)

.U57 ----- Cutter Number Author

2020 ----- Year of Publication

Every call number is written from left to right in the Library Catalog and from top to bottom at spine label.



C) How to Find Library Materials on the Shelves

Materials are arranged alphabetically by classification number.

The call number is read from left to right and top to bottom.





Learning is a treasure
that will follow its owner
everywhere

Location of Library Materials & Facilities

LEVEL	COLLECTIONS	FACILITIES
G		<ul style="list-style-type: none"> • 24 Hours Reading Room • Permata Hikmah Library
1	<ul style="list-style-type: none"> • UTHM Special Collection (conference paper, thesis, general, technical drawing) • Audio Visual Collection • Map Collection • Small Book • Dictionaries 	<ul style="list-style-type: none"> • 24 Hours Reading Room • GoBook Coffee Corner • Circulation Counter • Galeri Warisan Johor • Reference Desk • OPAC Terminals • Recreation Space • Closed Reference Room
2	<ul style="list-style-type: none"> • Open Access Collection (Shelves) Call no. : A-HN • Closed Access Collection 	<ul style="list-style-type: none"> • Hikmah Room • Iqra' Room • Remote Pilot Smart Classroom • SDGs Corner & S.I.R. Corner • Gambus@PTTA Exhibition • Showcase@UTHM: Innovation & Commercialization Centre • UTHM A.I. Lab • Big Stage • Sister Zone

LEVEL	COLLECTIONS	FACILITIES
3	<ul style="list-style-type: none"> Open Access Collection (Shelves) Call no. : HQ-QA (76.9) Current & Bound Journal 	<ul style="list-style-type: none"> Lestari Room Lestari Lounge Al-Jazari Auditorium Student's Workspace Eksplorasi Room Journal and Magazine Room Makerspace@UTHM Showcase@UTHM: Drone Technology@UTHM
4	<ul style="list-style-type: none"> Open Access Collection (Shelves) Call no. : QA 100 - Z Creative Collection – Novel 	<ul style="list-style-type: none"> Serambi al-Quran Iqra' Room Bibliotherapy Corner Showcase@UTHM: Muar Living Lab PTTA Mini Muzium





An investment in knowledge

pays the best interest

Online Database:



Journal Articles and conference proceedings



EBSCO Discovery Service is a local search engine that makes it easy for users to search all collections at PTTA either in online or printed format. With this search engine, users can search all library collections more quickly, easily and effectively without having to make a separate search on the PTTA databases subscription website, library catalogue, UTHM repository and so on.

Contains more than 223 management journals covering the fields of accounting, finance & economics, business, management & strategy, human resource management, organizational studies, information & knowledge management, marketing, operations, logistics & quality, public policy & environmental management, property management & built environment and tourism & hospitality.



IEEE IEL offers access to almost all information sources available in this database. Contains 464 electronic journal titles, 19 electronic book titles, 31,852 conference papers and 10,522 standards in the field of electrical engineering, electronics and computer science published by IEEE (Institute of Electrical and Electronics Engineers) which can be downloaded in full text.



Online Database:

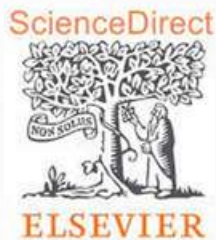
Journal Articles and conference proceedings



Journal Citation Reports is a systematic research tool to evaluate more than 12,557 leading journal titles based on index sources in the Web of Science (WoS). Help users understand journal performance in terms of impact factors and other metrics. Users can refer to the most frequently refereed journals, the journals with the highest impact factor and the most journals in a certain field to enable them to make evaluations and comparisons between all these journals during the article publication process.



ProQuest Dissertations & Theses Global is a databases containing more than 5 million dissertations and theses (2.6 million of which are accessible in full text) in all fields from leading universities around the world.



ScienceDirect is a comprehensive reference database containing 2,661 journal titles that can be accessed and downloaded. researchers, lecturers and students who offer high impact journal articles in 23 major fields including engineering, science and technology and social sciences.



Scopus is a bibliographic database that contains abstracts and citations for academic journal articles. Covering more than 250,000 materials from more than 5,000 publishers, 38379 of which are peer review journals in scientific fields, 184,531 books, 1176 book series and 35671 conference proceedings.

**SPRINGER
NATURE**

SpringerNature is a comprehensive reference PDK that offers high-impact journal articles in various fields including Behavioral Science, Biomedical & Life Science, Business & Economics, Chemistry & Materials, Science, Computer Science, Earth & Environmental Science, Engineering, Humanities, Social Science & Law, Mathematics & Statistics and Physics & Astronomy.



Turnitin is a reference tool for checking plagiarism. This reference tool is used to obtain similarity reports for theses and Bachelor's Projects (PSM) of students at UTHM. Access licenses for the 'Student' category are 3,000 while the 'Instructor' category has no limit.

Online Database:

Patent and Standard



British Standards Online (BSOL) is the BSI's main standards database used by professionals around the world. The subscribed Electrical Engineering In General module provides access to 749 standard documents that can be downloaded to be used as reference material in teaching, learning and research and development.

Online Database:

Malaysian Laws Information



PNMB

Trusted Secure Professional

Database regarding Acts, Ordinances, Regulations, Bills as well as legal information regarding Malaysia in particular. It covers Acts of Parliament, Main Acts (Original), Amendment Acts, Ordinances, Supplements to Bills, Rules & Regulations, Supplements to Legislation (A), Supplements to Legislation (B), Federal Constitution, Criminal Procedure Code, Penal Code, Land Code States, Rules of Court, Court Forms, General Orders (General Orders) and "Treasury Orders"; e-Newsletter; Selected Judgments of the Privy Council and Legal Terms.



MYLAWBOX

LabourLawBox provides material on industrial and employment law as contained in decisions of the Federal Court, Court of Appeal and High Court, as well as the Industrial Court. The database also provides selected practice notes, legal forms, precedents and sample agreements as they are used or used in court. This database is suitable for entrepreneurs, professionals, employers, employees, human resource personnel, labor departments, academics and researchers.

E-Books



ACCESS Engineering

AccessEngineering is a platform of interactive reference materials in the field of engineering and teaching and learning equipment that includes 889 e-book titles, 1084 videos, 59 spreadsheets, 7 case studies, and 3 tutorials.



EBSCOhost

EBSCO (EBSCOHost) contains more than 10,000 e-book titles in various subjects, including arts, business, economics, education, marketing, social sciences, medicine and others.



Knovel is the main technical reference to more than 4,800 e-book titles from leading publishers such as Elsevier, John Wiley & Sons, Institution of Engineering and Technology (IET) and American Society of Civil Engineers (ASCE) in the field of engineering, especially Civil Engineering & Construction Materials, Electrical & Power Engineering, Electronics & Semiconductors, General Engineering & Project Administration, Mechanics & Mechanical Engineering, Oil & Gas Engineering and Sustainable Energy & Development.



ProQuest Ebook Central provides content of nearly 211,058 e-book titles from leading publishers such as Taylor & Francis Group, Wiley and Oxford University Press in various fields including Arts, Business, Education, General, Health & Medicine, History & Political Science, Law, Literature & Language, Religion & Philosophy, Social Science and Science & Technology.

ScienceDirect



ELSEVIER

ScienceDirect e-Book provides access to over 9,000 e-book titles published by Elsevier covering the subjects of Engineering, Materials Science and Chemical Engineering. E-Books on ScienceDirect provide more of the background information and they have a larger bibliography, context, and summaries of theories and studies.

1 UTHM Chancellor Exhibition

2 Gallery

3 Circulation Counter

4 Recreation Space

5 Closed Reference Room

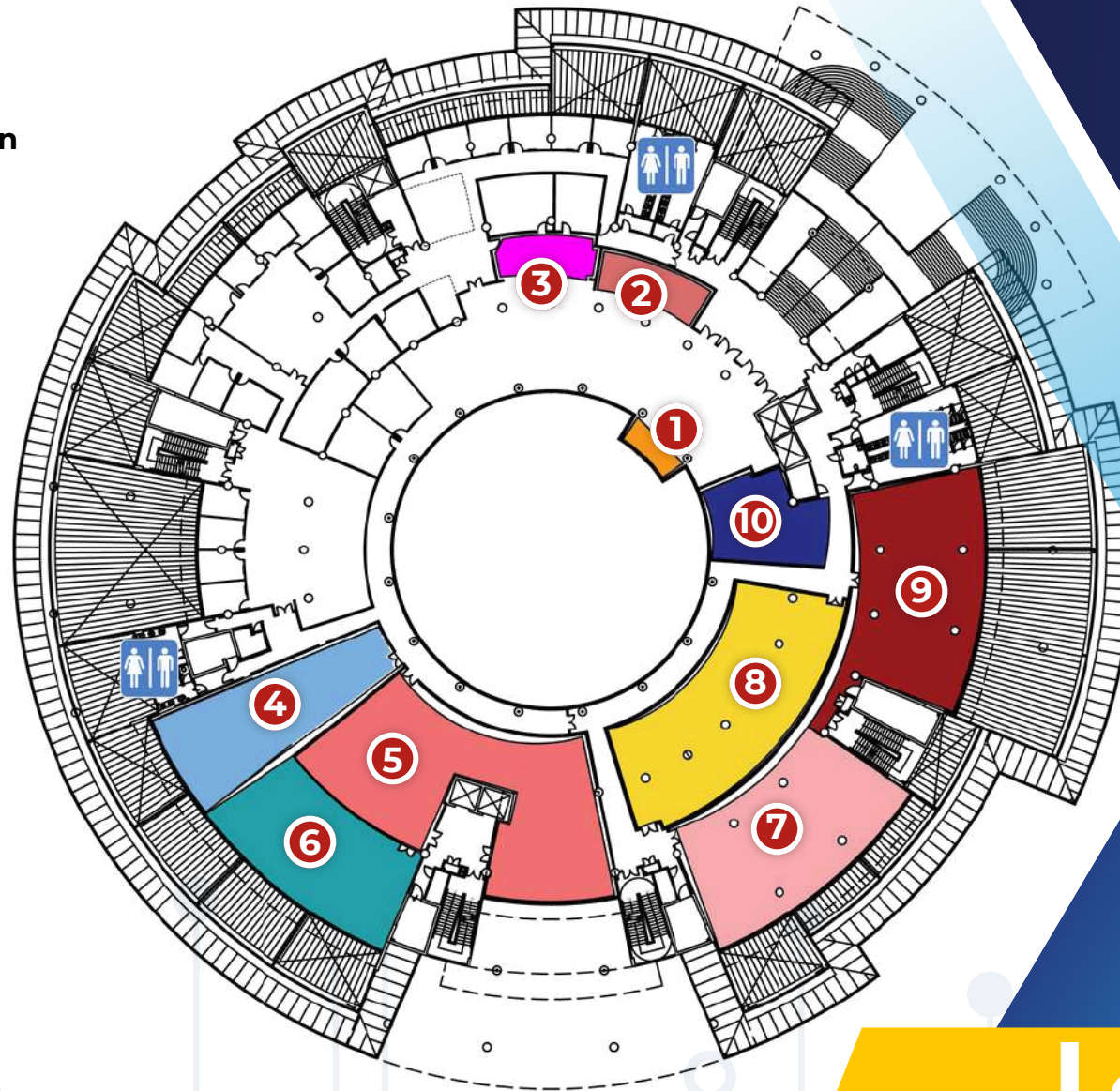
6 Audio Visual Room

7 Post Graduate Lounge

8 International Office

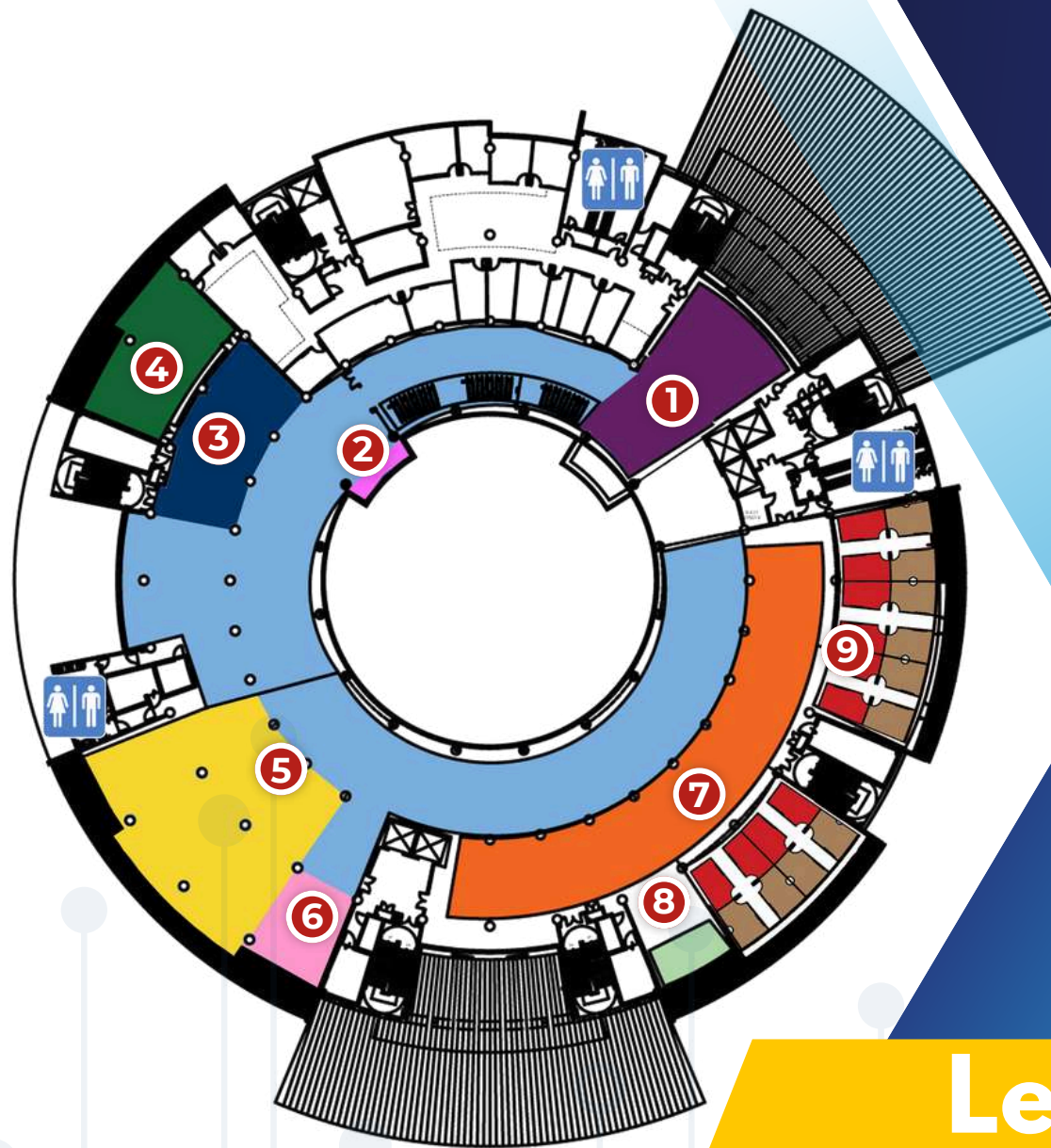
9 24 Hours Reading Room

10 GoBook Coffee Corner



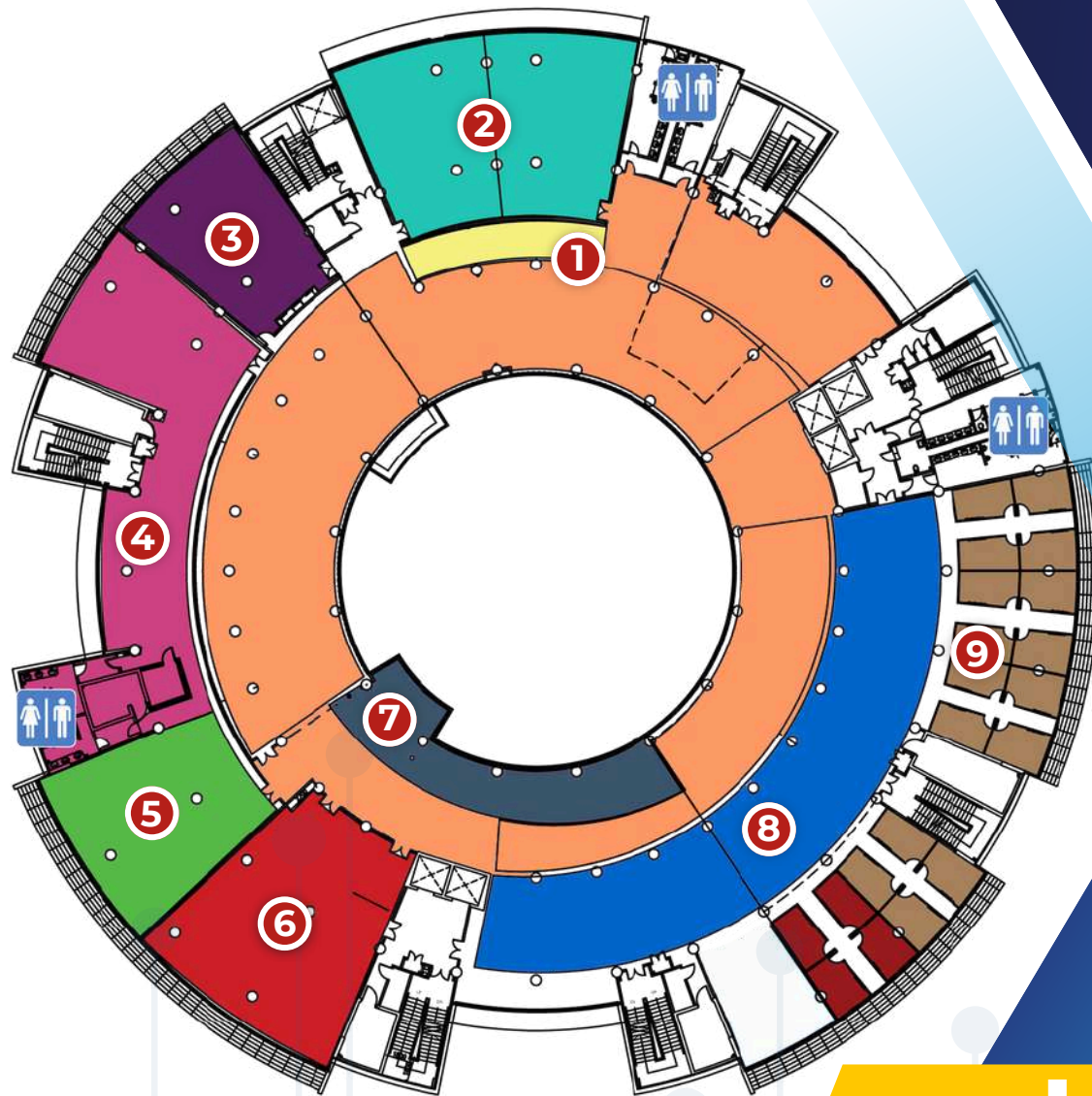
Level 1

- 1 Gambus Exhibition
- 2 ICC Exhibition
- 3 SDGs & S.I.R. Corner
- 4 Remote Pilot Smart Classroom
- 5 Big Stage
- 6 UTHM A.I. Lab
- 7 Open Access Collection
- 8 Sister Zone
- 9 Iqra Room



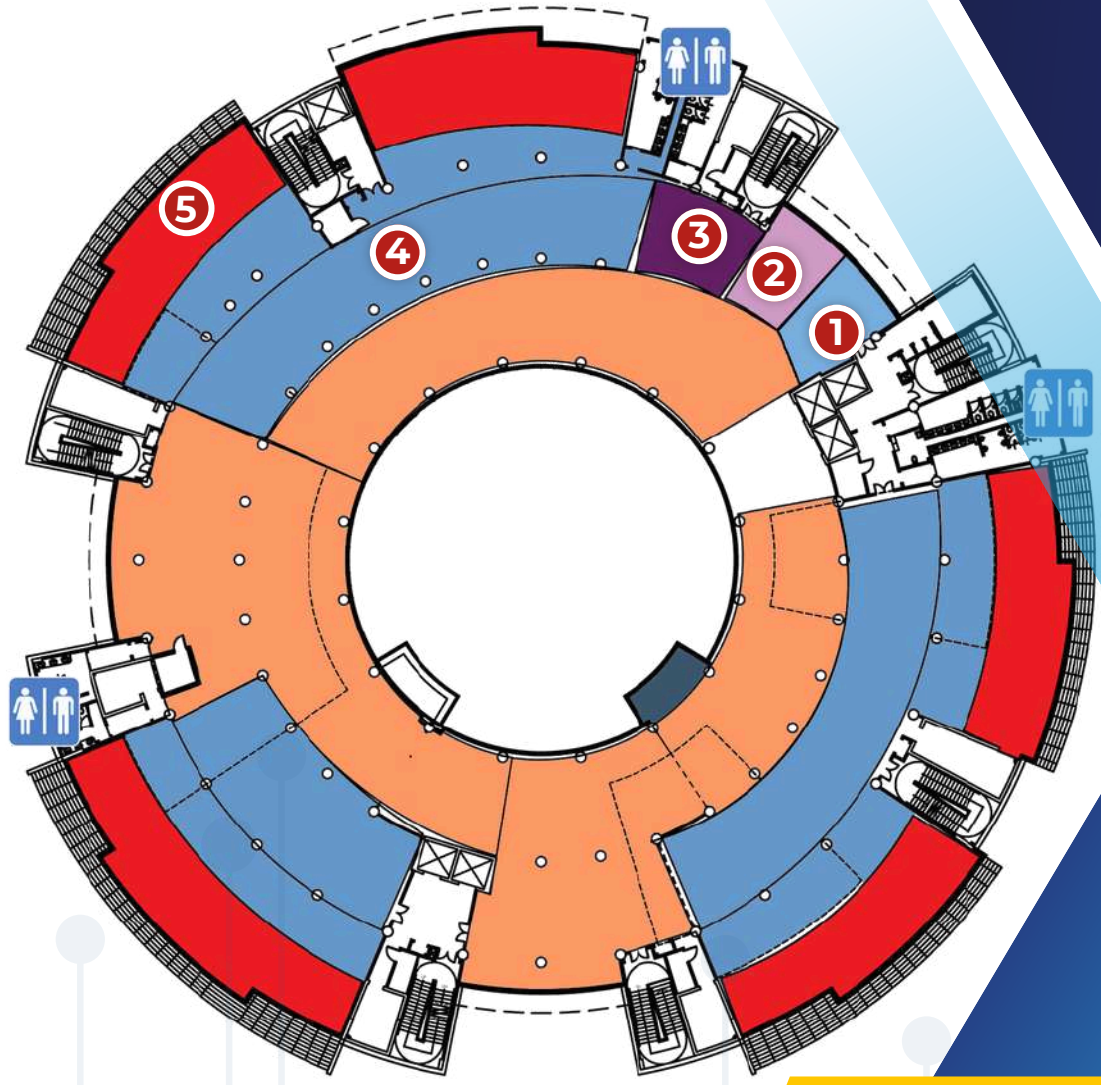
Level 2

- 1 Lestari Lounge
- 2 Lestari Room 1 & 2
- 3 Al-Jazari Auditorium
- 4 Journal & Magazine Room
- 5 Student's Workspace
- 6 Makerspace
- 7 Drone Exhibition Area
- 8 Open Access Collection
- 9 Eksplorasi Room



Level 3

- 1 Serambi al-Quran
- 2 Bibliotherapy Corner
- 3 PTTA Mini Museum
- 4 Open Access Collection
- 5 Iqra Room

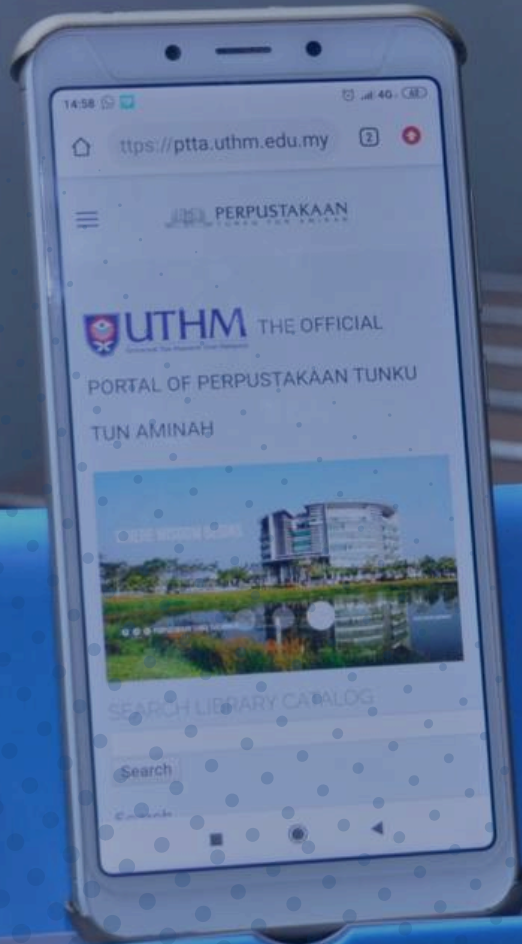


Level 4

Wisdom

comes not from age
but from education and learning

Get Along with PTTA



@pttauthm



07-453 3318

<https://ptta.uthm.edu.my>

Keep in touch with us!





Directory of Librarians

CHIEF LIBRARIAN

Zaharah Abd Samad

07-4533301

zaharah@uthm.edu.my

PLANNING & DEVELOPMENT DEPARTMENT

Siti Afifah Che Ismail

07-4533321

afifah@uthm.edu.my

QUALITY, ASSET AND FACILITIES DEPARTMENT

Suhaimi Mohd Sukor

07-4533329

suhaimi@uthm.edu.my

CUSTOMER SERVICES DIVISION

Khairunnisa Ahmad

07-4533332

nnisa@uthm.edu.my

PROMOTION & SPECIAL COLLECTION DIVISION

Norhaslini Abd Alim

07-4533312

haslini@uthm.edu.my

DIGITAL TECHNOLOGY APPLICATION DIVISION

Hisyam Abd Shukor

07-4533329

hisyam@uthm.edu.my

DATA MANAGEMENT DIVISION

Siti Raudhah Ruslan

07-4533315

raudhah@uthm.edu.my

Circulation Counter

07-453 3318

Reference Desk

07-453 3319

Administration and Finance

07-453 3306

Interlibrary Loan (ILL)

07-453 3458

Serials & Database

Subscription

07-453 3307

Information Literacy Class

07-453 3315

Monograph Acquisition

07-453 3321

Intellectual Property Acquisition

07-453 3327

Institutional Repository

07-453 3324

Tunku Tun Aminah Library

Universiti Tun Hussein Onn Malaysia,
86400,

Parit Raja, Batu Pahat, Johor

Tel: 07-4533318

Fax: 07-4533199

Website:

<http://library.uthm.edu.my/v3/>





PERPUSTAKAAN TUNKU TUN AMINAH

UNIVERSITI TUN HUSSEIN ONN MALAYSIA

TUNKU TUN AMINAH *Library*



TUNKU TUN AMINAH
Library | <https://ptta.uthm.edu.my>

@PTTAUTHM



Tunku Tun Aminah Library

Universiti Tun Hussein Onn Malaysia,
86400, Parit Raja, Batu Pahat, Johor

Tel: 07-4533318

Fax: 07-4533199

Website:

<http://library.uthm.edu.my/v3/>